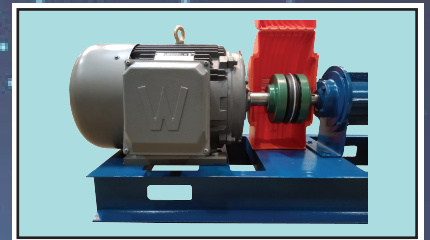
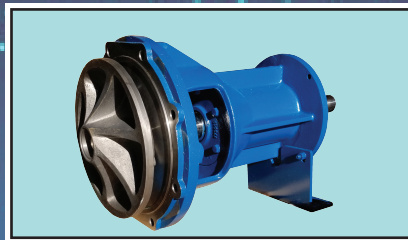




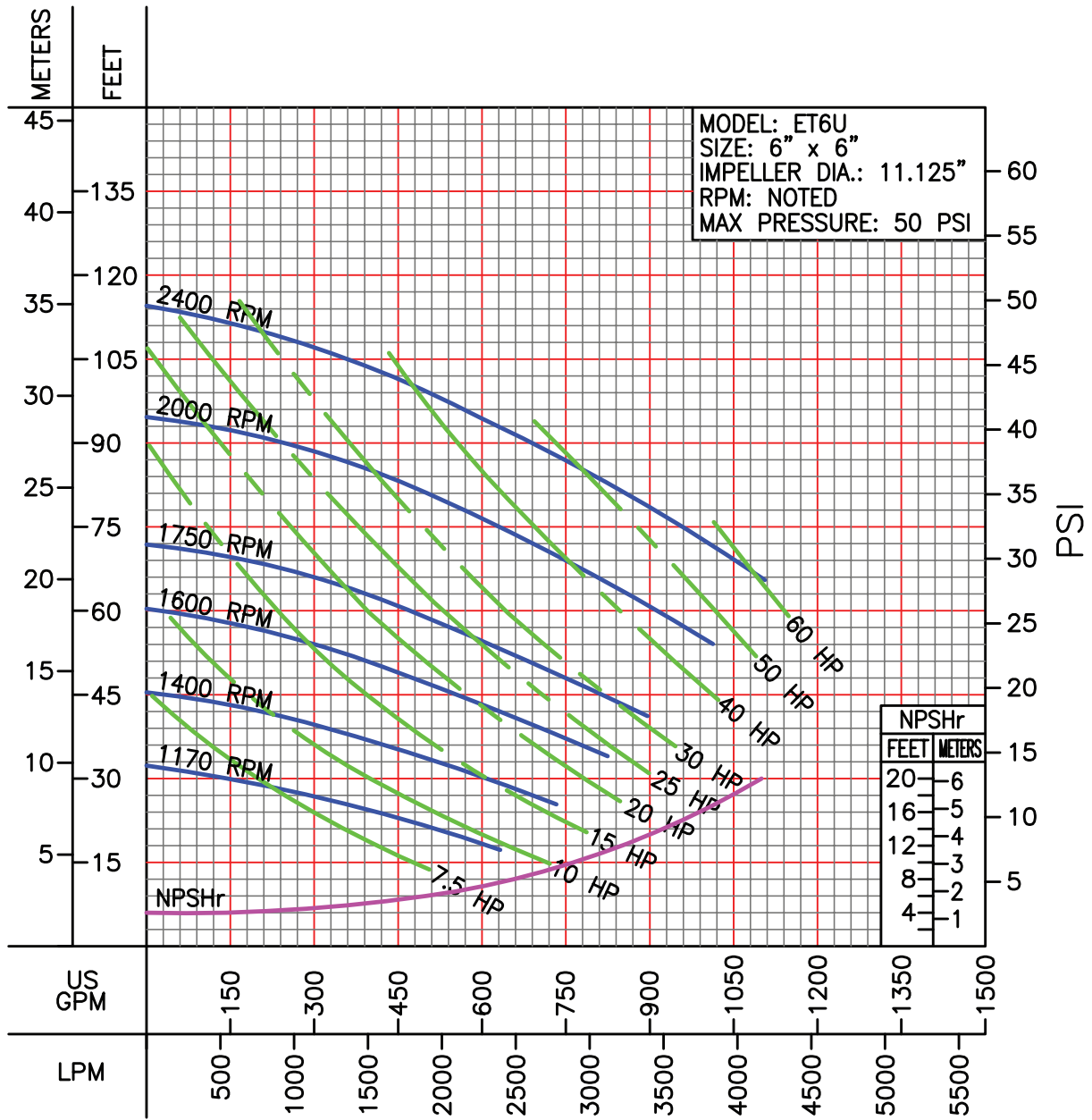
Barmesa ET6-U

A SMART SOLIDS HANDLING SOLUTION



Barmesa Pumps LLC and W. P. Law, Inc. have partnered to bring you a truly transformative self-priming solids handling pump, the ET6-U. Using proven technology, the ET6-U creates a powerful vortex action that allows the solids laden fluid to pass in front of the impeller instead of through it. This design feature provides unparalleled solids handling capability. The ET6-U with its 6-inch suction and discharge can pass up to 4.25 inch spherical solids.

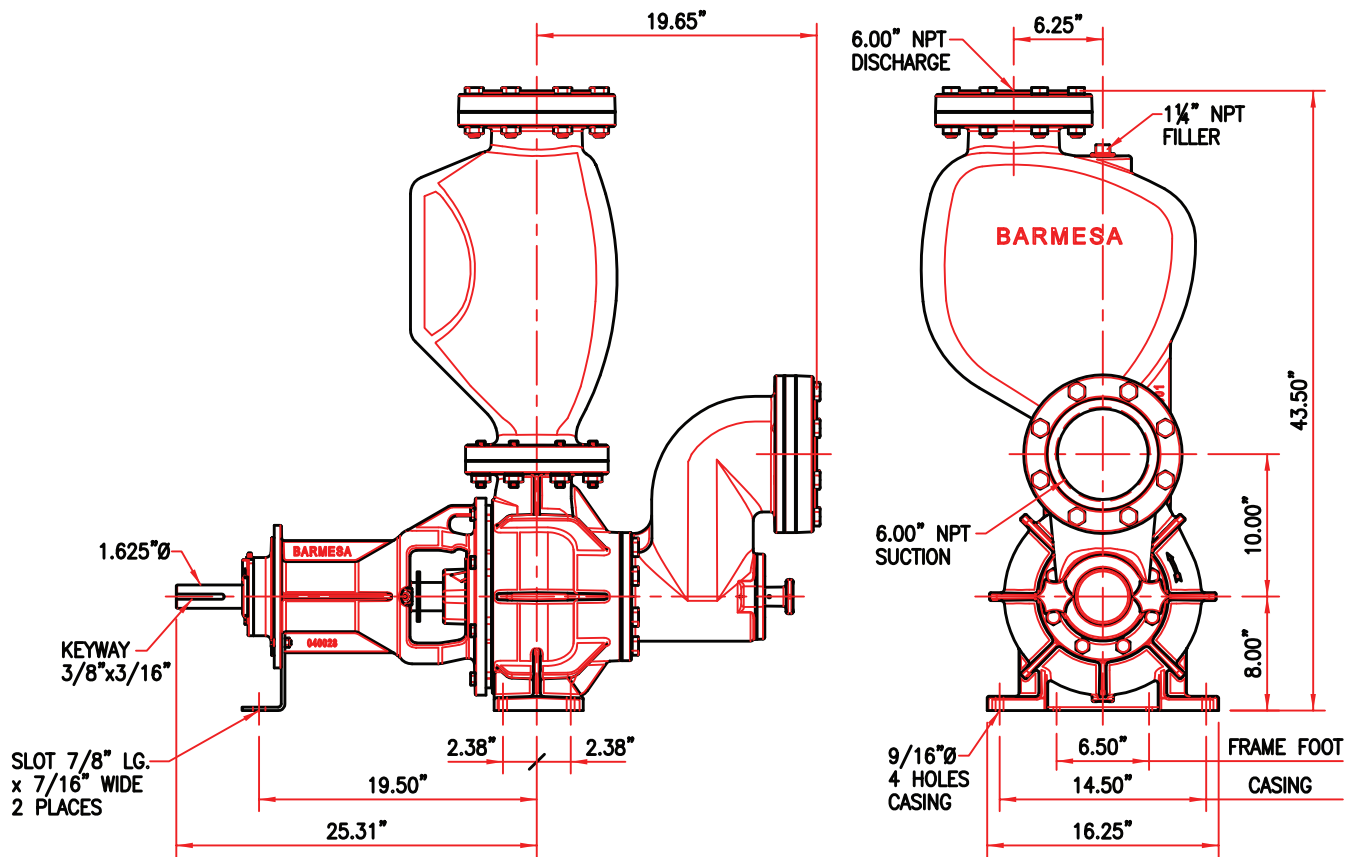
Performance Curve Self-Priming Pump



LIQUID: WATER
 SPECIFIC GRAVITY: 1.00

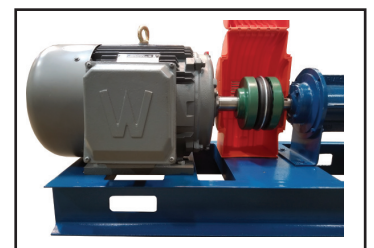
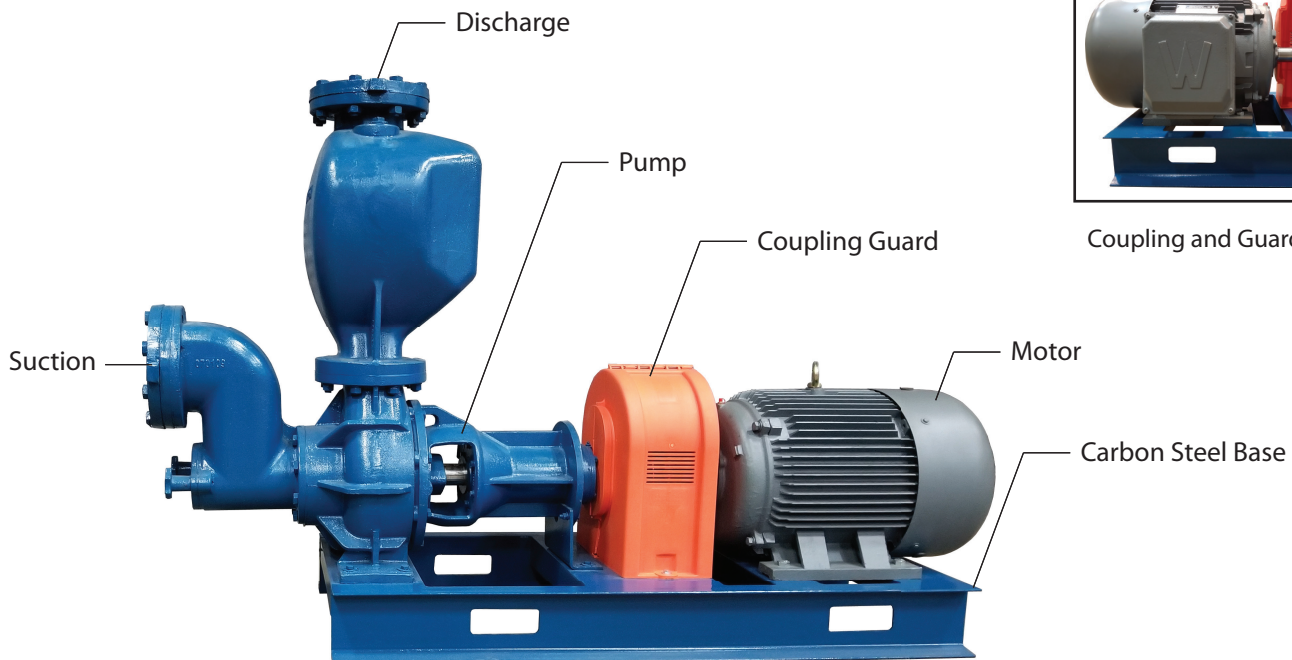
TEMPERATURE: 70° F (21° C)
 MAXIMUM DIA. SOLIDS: 4.25" in

Model ET6-U Bare Pump Drawing



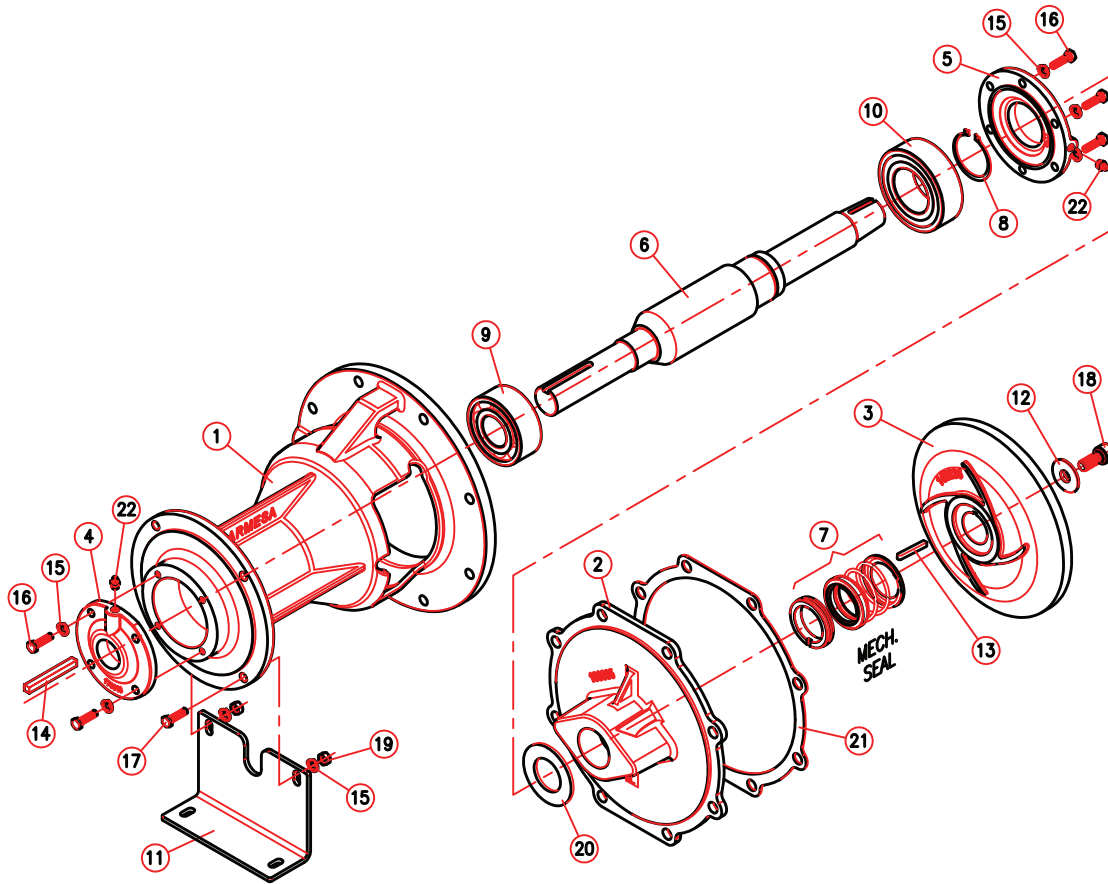
DIMENSIONS IN INCHES

ET6-U Component Diagram



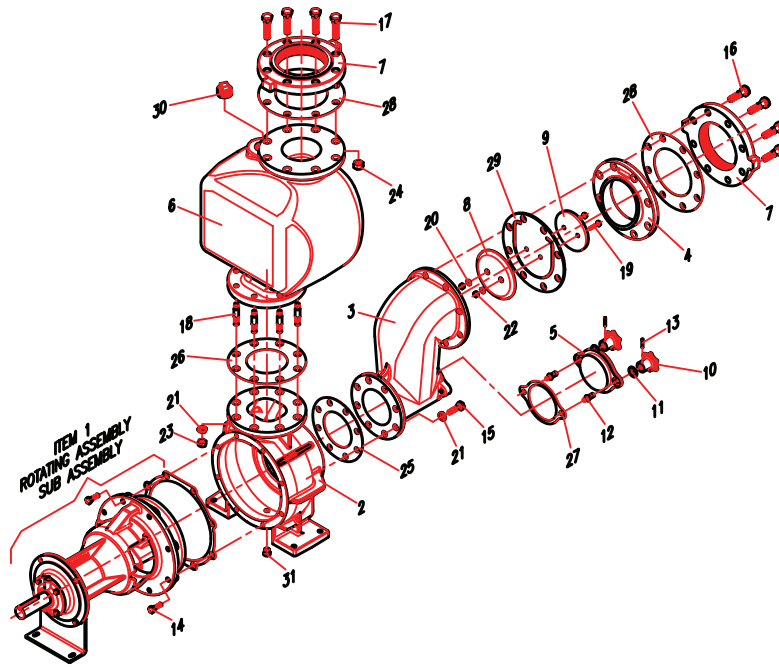
Coupling and Guard Assembly

ET6-U Self-Priming Centrifugal Pump Rotating Assembly Parts List



Item	Part No.	Description	Qty.
1	03040028	Bearing Housing	1
2	03180035	Seal Plate	1
3	03140236	Impeller	1
4	03170018	Bearing Cap Outboard	1
5	03170019	Bearing Cap Inboard	1
6	30300363	Shaft	1
7	31030391	Mechanical Seal 2"Ø type 1	1
8	31010017E	Snap Ring # 5100-255	1
9	31020024	Outboard Bearing	1
10	31020043C	Inboard Bearing	1
11	30400889	Bearing Housing Foot Support	1
12	30400414	Washer Impeller SS	1
13	30400633	Impeller Key	1
14	30400634	Coupling Key	1
15	91010012	Lockwasher 3/8"	12
16	91010242	Hex Head Screw 3/8" UNC x 1.0" Lg.	10
17	91010244	Hex Head Screw 3/8" UNC x 1½" Lg.	4
18	91010395B	Socket Head Capscrew 5/8" UNC x 1¼" SS	1
19	91010413	Hex Nut 3/8"	2
20	92010017E	Slinger	1
21	92010042E	Casing Gasket	1
22	93010041	Relief Fitting .125 NPT	2

ET6-U Self-Priming Centrifugal Pump Parts List



Item	Part No.	Description	Qty.	Material
1	35010059	Rotating Assembly ET6-U	1	
2	03090106	Casing	1	Cast Iron
3	03070109	Suction Elbow	1	Cast Iron
4	03050023	Suction Flange	1	Cast Iron
5	03220028	Inspection Plate	1	Cast Iron
6	03240001	Tank	1	Cast Iron
7	03060008	Flange 6" NPT	2	Cast Iron
8	03080017	Weight 6.84"Ø	1	Cast Iron
9	30400609	Weight 5½"Ø	1	Steel
10	03151003	Knob Handle	2	Cast Iron
11	91010004	Washer ½"	2	Steel
12	30400869E	Stud - Inspection Plate	2	AISI 1045
13	91010181E	Roll Pin	2	Steel
14	91010264	Hex Head Screw ½" UNC x 2"	8	Steel
15	91010289	Hex Head Screw 5/8" UNC x 1¼"	8	Steel
16	91010293	Hex Head Screw ¾" UNC x 2½"	8	Steel
17	91010294	Hex Head Screw ¾" UNC x 3"	8	Steel
18	91010315	Stud 5/8" x 3¼" Lg.	8	Steel
19	91010244	Hex Head Screw 3/8" UNC x 1½" Lg.	2	Steel
20	91010012	Lockwasher 3/8"	2	Steel
21	91010015	Lockwasher 5/8"	16	Steel
22	91010413A	Locknut 3/8"	2	Steel & Teflon
23	91010416	Hex Nut 5/8"	8	Steel
24	91010417	Hex Nut ¾"	8	Steel
25	92010053E	Suction Elbow Gasket	1	Rubber
26	92010053F	Casing Discharge Gasket	1	Rubber
27	92010053G	Inspection Plate Gasket	1	Rubber
28	92010159	Gasket 6"	2	Carton
29	92010229C	Check Valve	1	Neoprene
30	93010145	Pipe Plug 1½"	1	Cast Iron
31	93010149B	Pipe Plug 3/8"	1	Steel

Parts List

PRICE LIST

12/31/2022

PUMPS & ROTATING ASSEMBLY

PART #	DESCRIPTION	WEIGHT (lbs)	LIST PRICE
ET6U	PUMP, 6" SELF-PRIMING, MECH SHAFT SEAL	1070	\$13,350.00
ETU606	ROTATING ASSEMBLY FOR 6" PUMP	188	\$8,000.00

PUMP BASE ASSEMBLY

PART #	DESCRIPTION	WEIGHT (lbs)	LIST PRICE
ET6UBASE-LC	PUMP BASE FOR LONG COUPLED MOUNT, 40 HP, 324T FRAME MOTOR (Includes Coupling & Coupling Guard)	178	\$5,700.00

MOTORS

PART #	DESCRIPTION	WEIGHT (lbs)	LIST PRICE
MTRTEFC40HP	ELECTRIC MOTOR, 40 HP, 230/460 VAC, 3 PH, 324T FRAME, 1750 RPM, TEFC	531	\$5,960.00

ASSEMBLED UNITS

PART #	DESCRIPTION	WEIGHT (lbs)	LIST PRICE
-	LONG COUPLED UNIT (INCLUDES PUMP END, BASE ASSEMBLY, & 40 HP TEFC MOTOR)	1780	\$25,010.00

MOTOR CONTROLS

PART #	DESCRIPTION	WEIGHT (lbs)	LIST PRICE
PPANEL40HP230	PUMP PANEL, 40 HP, 230 VAC, 3PH, NEMA 3R ENCL, W/ DISCONNECT & HOA SWITCH	65	\$7,400.00
PPANEL40HP480	PUMP PANEL, 40 HP, 480 VAC, 3PH, NEMA 3R ENCL, W/ DISCONNECT & HOA SWITCH	55	\$4,660.00

REPLACEMENT PARTS

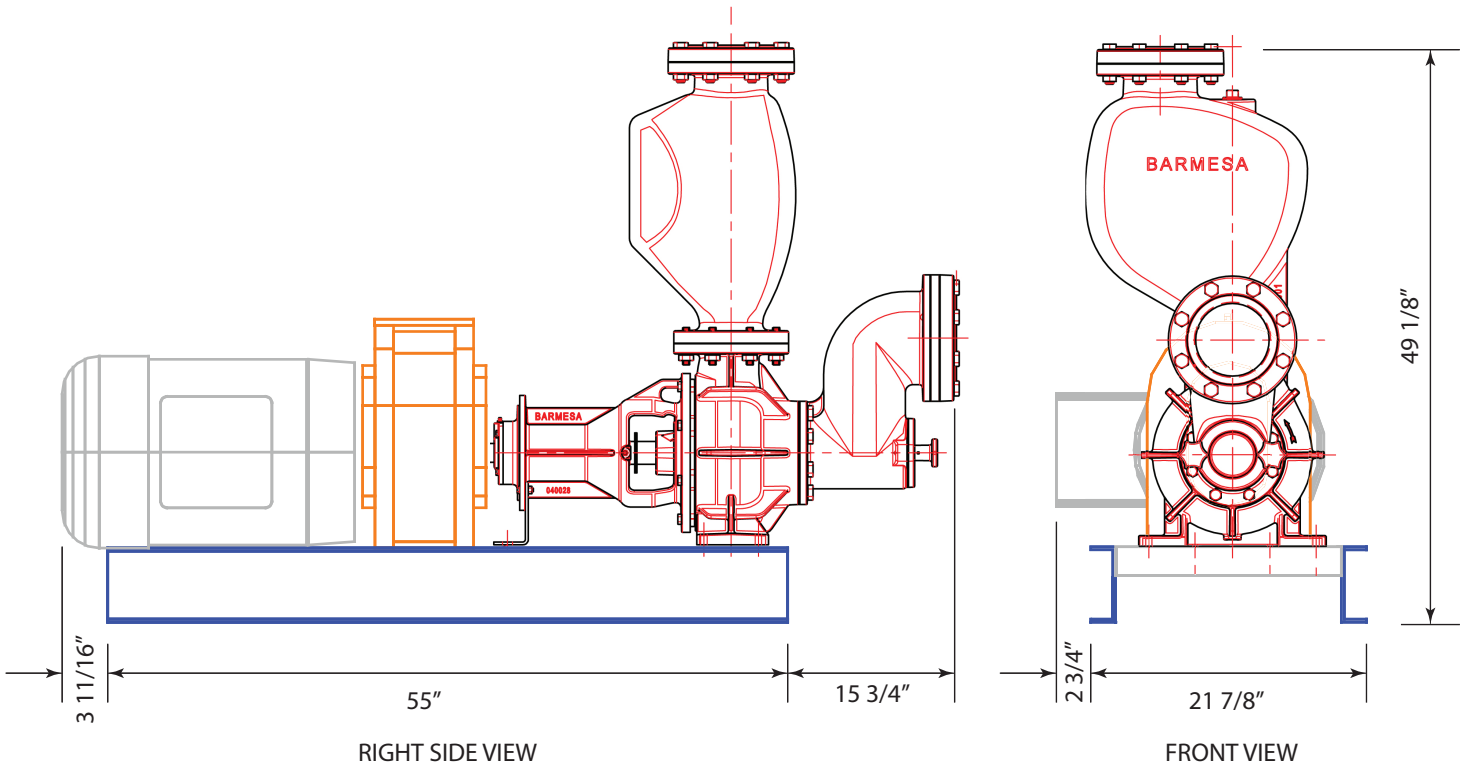
PART #	DESCRIPTION	WEIGHT (lbs)	LIST PRICE
ETU606	ROTATING ASSEMBLY FOR ET6U PUMP 35010059 (See Page 4)	188	\$8,000.00
10SX1-5/8	REPLACEMENT FLANGE FOR FLEXIBLE COUPLING, PUMP END	11	\$375.00
10SX2-1/8	REPLACEMENT FLANGE FOR FLEXIBLE COUPLING, MOTOR END	11	\$375.00
10ESLEEVE	REPLACEMENT SLEEVE FOR FLEXIBLE COUPLING	4	\$420.00
MCG2500A	REPLACEMENT COUPLING GUARD, LONG COUPLED MOUNT	4	\$610.00
BM03140236	IMPELLER, ET6-U BARMESA 03140236	25	\$2,935.00
BM03180035	SEAL PLATE, ET6-U BARMESA 03180035	25	\$1,867.00
BM31030391	MECH SEAL, ET6-U BARMESA 31030391	1	\$741.00
BM92010042E	GASKET, BODY ET6-U BARMESA 92010042E	1	\$72.00
BM92010229C-KIT	CHECK VALVE ASSY, ET6-U BARMESA 92010229C-KIT	8	\$352.00

ACCESSORY ITEMS

PART #	DESCRIPTION	WEIGHT (lbs)	LIST PRICE
MTGVF60CI	GATE VALVE, 6" FLANGED CAST IRON, EPOXY COATED, NON-RISING STEM	110	\$1,335.00
MTSCV60	SWING CHECK VALVE, 6" FLANGED, EPOXY COATED W/ OUTSIDE LEVER & WEIGHT	160	\$2,935.00
9L60FDI	90 DEG. ELBOW, 6" FLANGED, DUCTILE IRON	65	\$414.00
GASKNE60	GASKET, 6" FULL FACE FLANGE, NEOPRENE 1/8" THICK	1	\$11.00
BLTPK5060	FLANGE BOLT PACK FOR 5" & 6" ANSI FLANGE	5.5	\$41.00
MA60P8	MALE ADAPTER 6" PVC SCH-80, (MALE IPT X SOCKET)	3	\$136.00
F60P8	FLANGE 6" VANSTONE TYPE PVC SCH-80 (SOCKET)	5	\$83.00

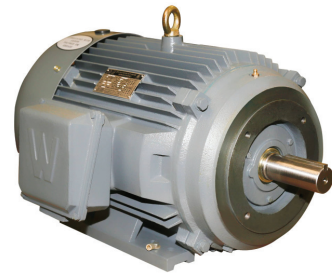
The 1750 RPM direct drive unit is our most popular application. Belt driven units are available upon request. Please contact W. P. Law, Inc. for pricing. W. P. Law, Inc. can also provide Variable Frequency Drive (VFD) control options if other pump rotating speeds are required to meet your application needs.

Barmesa ET6-U Layout Dimensions



Motor Specifications

ENCLOSURE	ODP	TEFC
HP	40	40
RPM	1750	1750
VOLTAGE	230/460 VAC	230/460 VAC
PHASE	3	3
FREQUENCY	60 HZ	60 HZ
SERVICE FACTOR	1.15	1.25
FRAME	324T	324T
FULL LOAD AMPS	95.8/47.9A	92.6/46.3 A
LOCKED ROTOR AMPS	630/315 A	580/290 A
APPROXIMATE WEIGHT	433 lbs	531 lbs

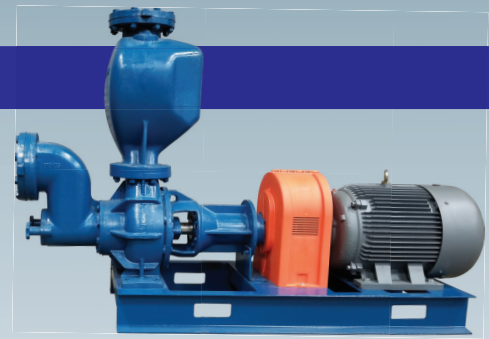


Worldwide Electric Corp. Premium Efficiency 3-Phase Induction Motor

WorldWide Electric's Epic Plus Severe Duty motor is designed, built, and suitable for both general purpose applications such as pumps, fans, compressors, blowers, and hydraulic power units as well as high torque applications such as crushers, hammermills, and aggregate equipment. The Epic Plus Severe Duty motor includes some of the industry's best features and benefits at an affordable price.

Markets & Applications for the ET6-U

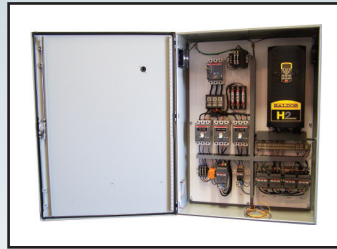
- Municipal Wastewater
- Food Processing
- Fruit & Vegetable Processing
- Animal Processing
- Animal Waste Lagoons



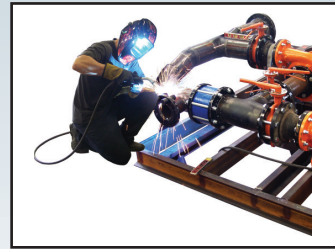
Other Capabilities



Filter Systems



Pump Controls



Custom Fabrication



Pump Repair

About Barmesa Pumps, LLC

Barmesa Pumps, LLC started operations in 1953 manufacturing small self-primer pumps, jet pumps, and end suction centrifugal pumps for the rural market. During the 1970's, new additions were made to the line of products, and we started manufacturing submersible solids handling pumps as well as grinder pumps.

Today after more than 60 years, we have manufacturing facilities and distribution centers across America and an extensive distributor network. Our state of the art manufacturing facilities have modern CNC machinery as well as sophisticated design and test capabilities. Barmesa serves markets such as marine, commercial, municipal, wastewater, water, industrial, construction, utility, chemical OEM, irrigation, dewatering, flood control, fire protection, as well as many other applications.

Our privately held family business is committed to offering an extensive variety of products with the best quality standards and on-time delivery. We are proud to say "Quality Pumps Since 1953."

About W. P. Law, Inc.

In 1970, Bill Law and his wife Dorothy started a small business in Lexington, SC supplying area farmers and industries with irrigation and pumping equipment.

Since that time, W. P. Law, Inc. has expanded its product offerings to include industrial pipe, valves and fittings; system controls; and a wide variety of pumps and pump systems. Our engineering, fabrication, and controls capabilities allow W. P. Law, Inc. the ability to provide unique and innovative solutions to our customers' fluid handling problems.

Mr. Law's philosophy of selling was simple, "Just help the customer figure how to do what they want to do." This philosophy still holds true today and that is why "Helping customers is our business" is the creed that we live by.

**Please visit our websites for
more information**

For sales or distribution opportunities,
please contact our main office:

Address: 303 Riverchase Way
Lexington, SC 29072

e-mail: marketing@wplawinc.com
Phone: **800-476-4515**

